



**FlowPlumb** Systems  
Plumbing For Life

**Residential and  
Commercial Towers**



## IPS PPR Plus System

More than 50 years ago, Mr. Erwin May, a German immigrant who landed in Argentina with strength, drive and skills, created a pioneering thermoplastic piping company. Today, we are still implanted with the same importance for quality, pride in what we do, and the obsession for constant improvement.

## Why Choose PPR Plus?

We are always at the forefront of technological investigation in thermo-plastic products and are committed to the development of the industry. Through this, we obtain a firm recognition of our products in the domestic and foreign markets.

## Fusion Technology

We use random copolymer polypropylene (PPR), which is designed in Europe as raw material, to manufacture our PPR Plus System. This is the best suited material to join by molecular fusion. Structural integrity is maintained by using only virgin polypropylene instead of recycled material.

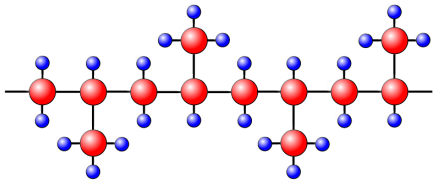


Fig. 1. Virgin Polypropylene



Once fused, the pipe and fitting are connected by molecular join.

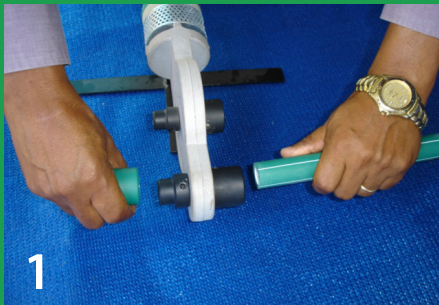
## Multi Layered PPR Plus

Internal anti-oxidant layer maintains purity of the water and avoids scale build up resulting in minimum load loss.



Tough external polypropylene layer will never corrode and contains an anti UV compound.

## Fast, Easy and Watertight Installation



### Fusion Timings

20mm	5 seconds
25mm	7 seconds
32mm	8 seconds
40mm	12 seconds
50mm	18 seconds



63mm, 75mm, 90mm and 110mm pipe sizes are available for special order only.



### Advantages of PPR Plus

#### Installation

- Impact resistant
- Increased elasticity and flexibility
- Lightweight

#### Daily Use

- Low thermal conductivity - low loss of heat
- High temperature resistance - 95°C
- Better flow rate
- High resistance to chemicals
- Maximises network pressure
- Totally non-toxic
- Odourless, colourless and tasteless water
- Cannot rust - no brown water
- Better sound insulation
- Resistance to high pressure - 115 bar maximum

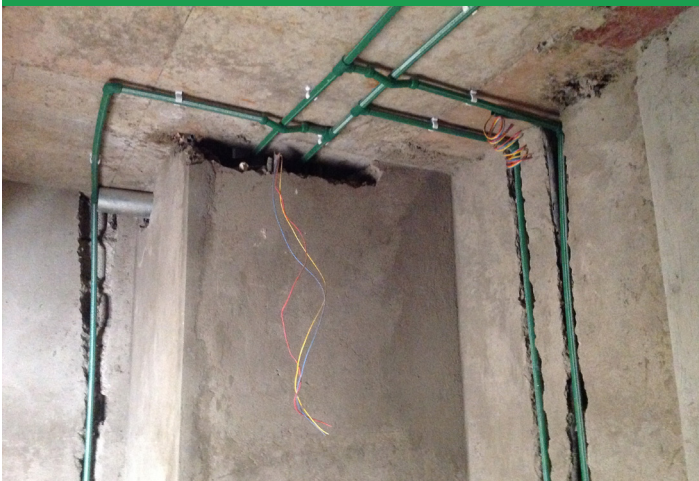
Overall, the main benefit of our PPR Plus System is that, installed correctly, **it is impossible for it to leak**. Installed correctly, no damage, no inconvenience and ultimately a system which outperforms all others whilst saving you time and money.

### Compare and Choose the Best System

System	Tube Diameter	PN	Continuous Working Pressure	
			20°C	70°C
IPS Fusion System (Multilayer Tube S3,2) Standard: DIN 8077/ IRAM 13470	20mm	20	20 bar	8.1 bar
	25mm	20	20 bar	8.1 bar
	32mm	20	20 bar	8.1 bar
	40mm	20	20 bar	8.1 bar
	50mm	20	20 bar	8.1 bar

Pressure table equivalent to DIN Standards and Testing at 20°C. Pipes marked with DIN rating (20 bar) for Europe, Africa and Australasia. Pipes also marked with IRAM rating (16 bar) for South American market.

### Case Study: Nexus Hotel in Addis Ababa



### Where To Use PPR Plus



#### Residential Towers

Reduced labour time - the Fusion coupling system allows serial installation in housing and building plans with identical distribution. With no maintenance issues, hotel rooms can remain occupied all year round. Tenant benefits - higher resistance, more quality, better service, no maintenance.

### Comparison Table

	IPS	Copper	CPVC	PVC	Iron
Saving of resources due to thermal conductivity	●	●	●	●	●
High pressure temperature strength	●	●	●	●	●
Cost benefit ratio	●	●	●	●	●
Environmental impact	●	●	●	●	●
Useful life	●	●	●	●	●

Optimal / Fair / Inadequate

### Case Study: Maintenance Site, Abuja, Nigeria



### Certification



# Water - Bathroom Fittings



Reliable, high quality and simple to install. Our range offers both price and flexibility, helping you to complete your project on time and on budget.



Bath Trap



Basin Trap



WC Frame



Flush Plate



WC Pan Connector



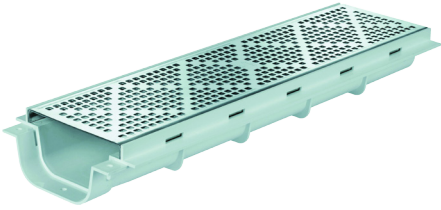
Round Shower Gully



## Pool and Spa Chrome Range

Our full range includes pipework and fittings which are ideal for servicing swimming pool and spa areas.

Channel Drainage



Shower Drainage



Chrome Fittings



## Roof Drainage

Manufactured in the UK and South Africa to British (BBA), European (CE) and South African (SABS) Standards, our products have world-leading quality built in and are the first choice for professionals everywhere. FlowPlumb Systems™ roof drainage products are manufactured in state of the art facilities, employing the latest methods of manufacturing and safety, and are feature packed for better performance.

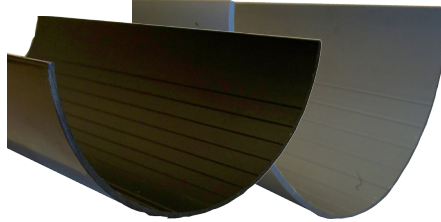
### Flat Roof Drainage



A comprehensive roof outlet range with market leading flow rate performance and a life expectancy of 50 years or more.



### Pitched Roof Drainage



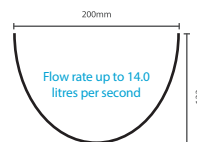
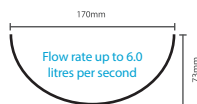
#### 170mm StormFlow

Houses, commercial and light industrial buildings benefit from this larger profile gutter system which can remove up to 6 litres per second of rainwater from the roof.

#### 200mm Industrial

*Available for special order only*

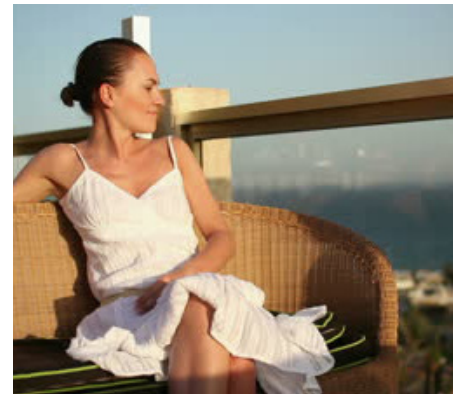
Large rainwater gutter systems ideal for commercial towers, retail malls, and industrial buildings. Sizes range from 125mm to 200mm.



### Balcony Drainage



A good cost-effective alternative to complicated and expensive metal outlets. Compatible with 3-layer bituminous felt, PVCu roof membranes and hot asphalt.



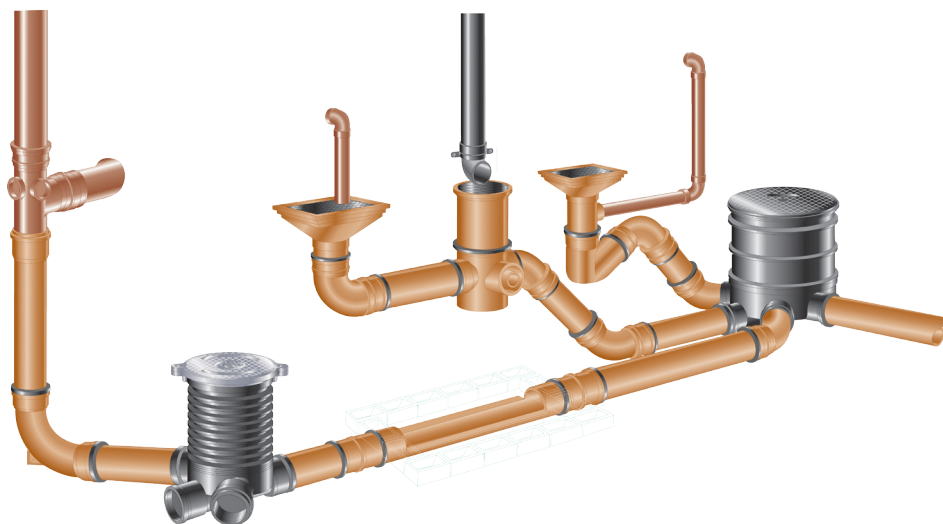


Manufactured by



## Underground Drainage System

Our Underground Drainage and Sewer System offers the most comprehensive range of products available today. High quality and manufactured in the UK to British Standards, our system reduces maintenance and enhances the overall value of your project.



## Chambers

Hunter inspection chambers are available in 110mm and 160mm sizes and are designed to offer an easier, more economical alternative to traditionally constructed manholes.

- They are reliable, quick and easy to install with ring seal sockets and a dry joint base
- Injection molded in strong polypropylene materials with added strengthening ribs
- With finger-friendly removable plugs - can be pushed out or re-sited as required
- Manufactured in environmentally-friendly recycled polypropylene

## Durapipe

### ABS



A piping system for air conditioning, chilled or boosted cold water applications and other environmental control systems.

Durapipe ABS is lightweight and the pipes remain extremely tough and durable even at water temperatures as low as -40°C. The complete pipework system which is manufactured from an ABS material incorporates pipes, fittings and valves.

It offers a 50-year service life as well as numerous benefits that alternative pipework materials cannot provide. These include reduced installation costs via a fast solvent-weld jointing procedure and low maintenance costs due to its limescale and corrosion resistance properties.

Key information:

- Size Range - 16mm to 315mm
- Pressure Rating - (Metric) PN10
- Temperature rating -40°C to 70°C

Perfect for air conditioning

### Vulcathene



A completely purpose-designed chemical resistant plumbing system that has been specified and installed in the laboratories of schools, universities, hospitals and research facilities worldwide for over 50 years.

Tried, tested and proven, Vulcathene is the only industrial chemical drainage system to have withstood the test of time in the most demanding of laboratory applications.

Two easy jointing methods, mechanical for demountable joints and enfusion (electrofusion) for welded joints, provide total versatility for designers and installers of chemical waste systems.

Key information:

- Size range of 38mm - 152mm
- Temperature rating -20°C - 100°C

Perfect for kitchens and laundries

### PLX



A complete range of dedicated fusion-welded pipework systems for the safe transfer of fuels. Suitable for use with leaded, unleaded petroleum, including ethanol rich alternative fuels (E85), diesel, bio-diesel and fuel oils.

The Durapipe PLX range represents a major innovation in pipework technology as it offers the ultimate in environmental protection with maximum protection against permeation and leak free joints.

Durapipe PLX is fully compliant with the Institute of Petroleum Performance Specification - Issue 2 for under ground pipework systems.

Key information:

- 10 bar pressure rating
- 30 year design life

Perfect for generators

## Case Study





Pipework offers fire a route to spread. Our fire collars ensure that fire is contained, allowing safe evacuation and time for the emergency services to arrive. Fire collars work by 'strangling' the pipe when heated, blocking the path of the fire. These should be fitted to all vertical pipes at each floor level.

## Compact Fire Collar

Double durable shell collar. Four secure fixing points. Designed for use with 110mm pipework.



## Unicollar

A roll of fire collar. Simply cut to size. Can be used on various sized pipes and can be retro-fitted to existing pipework.



**BEST  
SELLER**

## Quickstop Coupling

Intumescent coupling. Installed using standard solvent jointing methods. No mechanical fixings are required. 'Fit and forget' - no maintenance and no deterioration.



**Support Office**  
36 Market Square  
Toddington  
Bedfordshire  
LU5 6BS  
+44 (0)1582 807 363  
[www.africansupplies.co.uk](http://www.africansupplies.co.uk)

**FlowPlumb** Systems  
Plumbing For Life